



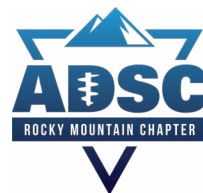
S3: Slopes, Support and Stabilization

August 6-8, 2024 | Aurora, Colorado



2024 Conference Program

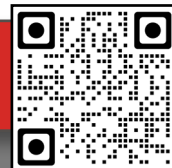
In Cooperation with:



Media Partner:



www.dfi-events.org/s3-24



Technical Program Committee

Conference Chair

Sue Frank | TEI Rock Drills Inc.

Technical Program Co-Chairs

Christopher Ramsey, P.E. | Schnabel Engineering, LLC
*Deep Foundations for Landslides and Slope Stabilization
Committee Chair*

Edward Laczynski, P.E. | Wagman Heavy Civil
Anchored Earth Retention Committee Co-chair

Jeff Segar, P.E., S.E. | GeoStabilization International
Anchored Earth Retention Committee Co-chair

Timothy Siegel, P.E., G.E., BC.GE | Dan Brown and Associates, PC
Ground Improvement Committee Chair

S3 Technical Program Committee

Ryan Allin, P.E. | Pile Dynamics, Inc.
Testing and Evaluation Committee Chair

Alex Filotti, P.E., M.B.A. | Citnalta Construction
Risk and Contracts Committee Chair

Renee Fippin, P.E., G.E. | Delve Underground
Tunneling and Underground Committee Co-Chair

David Graham, P.E., BC.GE | Dan Brown and Associates, LLC
Drilled Shaft Committee Chair

Meeok Kim, P.E., Ph.D. | Thornton Tomasetti
Structural Slurry Wall and Seepage Control Committee Co-Chair

Mary Ellen Large, P.E., BC.GE | Nicholson Construction Company
Structural Slurry Wall and Seepage Control Committee Co-Chair

David Miller, P.E. | ADM Consulting
Soil Mixing Committee Chair

Mary Nodine, P.E. | Federal Highway Administration
*Subsurface Characterization for Deep Foundations
Committee Chair*

Jamey Rosen, P.Geo. | Geosyntec Consultants, Inc.
Information Management Systems Committee Chair

Jon Sinnreich, M.Eng., P.E. | Load Test Consulting
Seismic and Lateral Loads Committee Chair

Bob Stier | Drill Tech Drilling & Shoring, Inc.
Tunneling and Underground Committee Co-Chair

Gerald Verbeek | Allnamics Pile Testing Experts BV
Sustainability Committee Chair

Deep Foundations Institute

Theresa Engler, Executive Director
Angie Gibble, Director of Events

Matthew R. Glisson, P.E., Director of Technical Activities
Jaime Cettina, Professional Development Coordinator
Angelina Servin, Events Coordinator

Conference Details*

Wi-Fi Access Info

Network: **Hyatt Conference Network** | Password: **Hyatt2024**

Online Proceedings

The conference proceedings will be available about three weeks following the event. A web link and instructions to access the proceedings will be emailed to the email address we have on file for each attendee. Please email **events@dfi.org** for more information or stop by the Registration Desk.

Professional Development Hours (PDHs)

Professional Development Hours (PDHs) will be provided after the completion of each session evaluation through the conference module. Attendees are responsible for determining whether or not these PDHs are accepted by their respective licensing board.

Registration Hours | Aurora Foyer

Tuesday, August 6 12:00 p.m. - 5:30 p.m.
Wednesday, August 7 7:30 a.m. - 5:30 p.m.
Thursday, August 8..... 7:30 a.m. - 12:00 p.m.

Exhibit Hall Hours | Aurora I & II, 1st Floor

Exhibitor set up: Tuesday, August 6 12:00 p.m. - 5:30 p.m.
Wednesday, August 7 7:30 a.m. - 7:15 p.m.
Thursday, August 8..... 7:30 a.m. - 2:55 p.m.
Exhibitor break down: Thursday, August 8 2:55 p.m. - 6:00 p.m.

General Photography

Photos will be taken throughout the program in an effort to capture as much of the conference activity as possible and will be posted on the website for viewing after the event. Unfortunately, we cannot guarantee that all booths or speakers will be photographed.

Please note: DFI reserves the right to use these images on the DFI website, in Deep Foundations magazine, in newsletters and for other publicity materials. As a registrant/participant in the conference, you are consenting to the use of said images as described above.

DOWNLOAD THE APP!



DFI S3 2024 | Conference Schedule* | Day One | Tuesday, August 6

Day One Schedule At-a-Glance*		Technical Committee Meeting Schedule*	
12:00 p.m. - 5:30 p.m.	Conference Registration Aurora Foyer	Meetings will be held in Conference Rooms I & II, 1 st Floor	
12:00 p.m. - 5:30 p.m.	Exhibitor Set-Up Aurora I & II	2:00 p.m. - 3:00 p.m.	Deep Foundations for Landslides & Slope Stabilization Room I
2:00 p.m. - 5:30 p.m.	DFI Technical Committee Meetings <i>See schedule at right</i>		Structural Slurry Wall & Seepage Control Room II
5:30 p.m. - 7:00 p.m.	DFI WiDF Networking Reception	3:00 p.m. - 3:15 p.m.	Break
		3:15 p.m. - 4:15 p.m.	Soil Mixing Room I
			Subsurface Characterization for Deep Foundations Room II
		4:15 p.m. - 4:30 p.m.	Break
		4:30 p.m. - 5:30 p.m.	Ground Improvement Room I

**As of 7/25/2024*

Conference Schedule* | Day Two | Wednesday, August 7

7:30 a.m. - 5:30 p.m.	■ All Functions are on the 1st Floor ■
7:30 a.m. - 8:30 a.m.	Conference Registration Aurora Foyer
	Networking Breakfast and Exhibition Aurora I & II
	Moderators & Speakers Technical Rehearsal Aurora III & IV
	■ All Plenary Sessions will be held in Aurora III & IV ■
8:30 a.m. - 9:30 a.m.	OPENING PLENARY SESSION: The State of SOE <i>Moderator: Sue Frank TEI Rock Drills Inc.</i>
8:30 a.m. - 8:45 a.m.	Conference Welcome
8:45 a.m. - 9:30 a.m.	Keynote Speaker: Current State of Practice for Deformation Criteria for SOE Wall Systems <i>Tony Marinucci, Ph.D., P.E. V2C Strategists, LLC</i>
9:30 a.m. - 10:15 a.m.	Networking Break and Exhibition Aurora I & II
10:15 a.m. - 12:20 p.m.	PLENARY SESSION 2: Slope Nailing and Stabilization <i>Moderator: Timothy Siegel, P.E., G.E., BC.GE Dan Brown and Associates, PC</i>
10:15 a.m. - 10:40 a.m.	Analyzing The Difference Between A Linear Alignment of Piles Versus Staggered Piles For Slope Stabilization <i>Roberto Nevarez, P.E. Subsurface Construction Company</i>
10:40 a.m. - 11:05 a.m.	Denver Broncos Practice Facility Helical Soil Nail Shoring <i>Kevin Baumgartner, P.E. Magnum Geo-Solutions and Jeff Wenzel Park Range Construction, Inc.</i>
11:05 a.m. - 11:30 a.m.	Embankment Slope Stabilization with Drilled Shafts at HAM-275-7.02 in Cincinnati, Ohio <i>Louis Schulte, P.E. E.L. Robinson Engineering</i>
11:30 a.m. - 11:55 a.m.	Deep Mix Method Columns for Storm Water Detention Pond Stability and Constructability <i>Steven Lowe, P.E. Mueser Rutledge Consulting Engineers and Aiman Naguib ENTACT, LLC</i>
11:55 a.m. - 12:20 p.m.	Case History - Landslide Stabilization Using Strand Anchor Block <i>Minh Le Digioia Gray and Associates</i>
12:20 p.m. - 1:20 p.m.	Networking Luncheon and Exhibition Aurora I & II
1:20 p.m. - 3:25 p.m.	PLENARY SESSION 3: Slides and Support of Excavation <i>Moderator: Meeok Kim, P.E., Ph.D. Thornton Tomasetti</i>
1:20 p.m. - 1:45 p.m.	Embankment Stability Analyses Using Lesser of Drained and Undrained Strengths on a Slice-by-Slice Basis <i>Garry Gregory, Ph.D., P.E., S.E., BC.GE Gregory Geotechnical</i>
1:45 p.m. - 2:10 p.m.	Cost-Effective Landslide Mitigation: Harnessing the Power of Horizontal Drains in Glacier National Park <i>Brian Collins BGC Engineering</i>
2:10 p.m. - 2:35 p.m.	Steep Slope Remediation – Insights into the Good the Bad and the Ugly <i>David Salter, Ph.D. P.E. DRS Engineering Inc.</i>
2:35 p.m. - 3:00 p.m.	Case Study: Retaining Structure to Support Deep Excavation and a Temporary Bridge <i>Hamid Batenipour, Ph.D., P.Eng., PMP Kiewit Infrastructure Engineers</i>
3:00 p.m. - 3:25 p.m.	Multiple Installation Systems to Limit SOE Impacts to Aging Infrastructure in the Nation's Capital <i>Sixto Fernandez, P.E and Vanessa Tejada Clark Foundations, LLC</i>
3:25 p.m. - 4:10 p.m.	Networking Break and Exhibition Aurora I & II
4:10 p.m. - 5:40 p.m.	PLENARY SESSION 4: Panel Discussion on Positive Strategies for Emergency Communication <i>Moderator: Jeff Segar, P.E., S.E. GeoStabilization International</i> <i>Panelists: Sue Frank TEI Rock Drills Inc., Mary Ellen Large, P.E., BC.GE Nicholson Construction Company, Lucky Nagarajan Geocomp, Inc., Helen Robinson, P.E., PMP, BC.GE GEI Consultants, Inc. and Alissa Maxwell Weiss Hub Foundation Company, Inc.</i>
5:40 p.m. - 5:45 p.m.	Closing Remarks
5:45 p.m. - 7:15 p.m.	Welcome Reception and Exhibition Aurora I & II

**Subject to Change*

Conference Schedule* | Day Three | Thursday, August 8

<p>7:30 a.m. - 12:00 p.m. 7:30 a.m. - 8:30 a.m.</p>	<p>Conference Registration Aurora Foyer Networking Breakfast and Exhibition Aurora I & II Moderators & Speakers Technical Rehearsal Aurora III & IV</p> <p style="text-align: center;">▪ All Plenary Sessions will be held in the Aurora III & IV ▪</p>
<p>8:30 a.m. - 10:10 a.m. 8:30 a.m. - 8:35 a.m. 8:35 a.m. - 9:20 a.m. 9:20 a.m. - 9:45 a.m. 9:45 a.m. - 10:10 p.m.</p>	<p>PLENARY SESSION 5: Roads, Rail and Risk! <i>Moderator: Christopher Ramsey, P.E. Schnabel Engineering, LLC</i></p> <p>Conference Welcome</p> <p>Invited Speaker: A Strategic Plan for Transportation Resilience <i>Silas Nichols, P.E. Federal Highway Administration</i></p> <p>Sacramento River East Levee Contract 3 – Design and Construction Challenges and Solutions <i>Timothy Williams, P.E. Kleinfelder</i></p> <p>Risks from Adjacent Construction <i>Michele Stein, P.E. and Antonio De Luca, Ph.D., S.E., P.E. Thornton Tomasetti</i></p>
<p>10:10 a.m. - 10:55 a.m.</p>	<p>Networking Break and Exhibition Aurora I & II</p>
<p>10:55 a.m. - 12:35 p.m. 10:55 a.m. - 11:20 a.m. 11:20 a.m. - 11:45 a.m. 11:45 a.m. - 12:10 p.m.</p>	<p>PLENARY SESSION 6: Ground Improvement <i>Moderator: David Miller, P.E. ADM Consulting</i></p> <p>Cyclic Failure (“Liquefaction”) Mitigation of Loess in the New Madrid Seismic Zone <i>Thomas Humbert Schnabel Engineering, LLC</i></p> <p>Improving Post-Earthquake Slope Stability with Soil-Cement Shear Panels at Boiling Spring Lakes <i>Austin Spencer, P.E. Schnabel Engineering, LLC</i></p> <p>420 Carroll Street Abstract: Soil Mix Excavation Adjacent to the Gowanus Canal <i>Adam Dyer and Charlotte Caton Mueser Rutledge Consulting Engineers and Edoardo Chiarelli, EIT New York Concrete Corporation</i></p>
<p>12:10 p.m. - 1:10 p.m.</p>	<p>Networking Luncheon and Exhibition Aurora I & II</p>
<p>1:10 p.m. - 2:25 p.m. 1:10 p.m. - 1:35 p.m. 1:35 p.m. - 2:00 p.m. 2:00 p.m. - 2:25 p.m.</p>	<p>PLENARY SESSION 7: Slope Nailing and Stabilization <i>Moderator: Jacob Prezkuta Drill Tech Drilling & Shoring, Inc.</i></p> <p>Confidential Project – Earth Retention in the Rocky Mountains on a Moving Landslide <i>Zakary Sobotka and Nigel Miller Nicholson Construction Company</i></p> <p>Emergency Slope Repair using Reinforced Soil – Gill, Massachusetts <i>Jonathan Ernst, P.E. Geosciences Testing and Research, Inc.</i></p> <p>Hybrid Design Approach for Anchored Wire Mesh: Towards a Displacement Based Design <i>Lucas Martins Maccaferri Inc.</i></p>
<p>2:25 p.m. - 2:55 p.m. 2:55 p.m. - 6:00 p.m. 2:55 p.m. - 4:40 p.m.</p>	<p>Networking Break and Exhibition Aurora I & II</p> <p>Exhibitor Breakdown Aurora I & II</p> <p>CLOSING PLENARY: Software Discussion <i>Moderator: Edward Laczynski, P.E. Wagman Heavy Civil</i></p> <p>Software Discussion <i>Bob Group, P.E. Colorado Department of Transportation</i> <i>Grace Huang, Ph.D. Rocscience</i> <i>Tim Shevlin, P.G. Geobrugg North America, LLC</i></p>
<p>4:40 p.m. - 4:45 p.m.</p>	<p>Closing Remarks Aurora III & IV</p>

*Subject to Change



ISCHEBECK NORTH AMERICA | GOLD SPONSOR | BOOTH 407

3050 N. Horseshoe Drive, Suite 275, Naples, FL 34104 USA • Phone: +1 (239) 403-8522
www.ischebeckusa.com

Marc Mastrantuono • marc.mastrantuono@ischebeckusa.com

Ischebeck North America is the exclusive manufacturer and supplier of the industry renowned TITAN hollow bar system! As the North American subsidiary of industry leader Friedr. Ischebeck GmbH, well known throughout the construction industry as innovators in formwork, trenching, and geotechnical solutions. Since 2009 Ischebeck North America has brought the same high quality geotechnical solutions to the market as pioneered by our German parent company. We now offer our domestically manufactured products direct to the contractor with second-to-none customer support. Are YOU drilling with TITAN?



ADSC, ROCKY MT CHAPTER

8445 Freeport Parkway, Suite 325, Irving, TX 75063 USA • Phone: +1 (469) 359-6000
www.adsc-iafd.com

Cody Telgheder • cody.telgheder@nicholsonconstruction.com

Nigel Miller • nigel.miller@nicholsonconstruction.com

ADSC is a construction trade association dedicated to the deep foundations industry. Our focus is on drilled shaft, anchored earth retention, and micropile technologies. We are represented by specialty subcontractors, civil and geotechnical engineers, and equipment manufacturers and suppliers from around the world.



AKSELA | BOOTH 307

2505 North 20th Street East, Omaha, NE 68110 USA • Phone: +1 (877) 852-0012
www.akselafoundation.com

Todd Guenther • toddguenther@akselafoundation.com

Aksela is a foundation equipment rental and service provider located in Omaha, Nebraska that provides construction equipment to its customers. Aksela is committed to providing our customers with the highest levels of equipment, service, and support.



BERKEL | BOOTH 403

2649 South 142nd Street, P.O. Box 335, Bonner Springs, KS 66012 USA • Phone: +1 (800) 536-5305
www.berkelandcompany.com

W. Morgan NeSmith • morgan@berkelandcompany.com

BERKEL is a 100% ESOP/Employee-owned company whose employees have a vested interest in the organization and work hard to continue the legacy of exceeding customers' expectations through quality and innovation. Since 1959, BERKEL has provided specialized foundation and construction services including design and installation of Auger Pressure Grouted (APG) piles and Auger Pressure Grouted Displacement (APGD) piles, Ground Improvement and stabilization including Rigid Inclusions and Liquefaction Mitigation, Shoring and Earth Retention, Underpinning existing structures, Micropiles, Helical and Driven Piles, and Drilled Shafts. Headquartered in Kansas City, regional offices are located in Atlanta, Baltimore/D.C., Houston, Louisville, Salt Lake City and San Francisco. Outside of the USA, BERKEL is involved with a number of projects in the Caribbean and continues to expand its growth globally.



BIOBILT INFRASTRUCTURE SYSTEMS | BOOTH 103

2301 Engineers Drive SE, Marietta, GA 30067 USA • Phone: +1 (510) 542-7360
www.biobiltis.com

John Huntoon • john.huntoon@biobiltis.com

BioBilt manufactures root-inspired anchor systems for retaining walls and excavation support that expedite installation and reduce the required bonded length of tiebacks and soil nails.



CONDON-JOHNSON & ASSOCIATES, INC. | BOOTH 203

480 Roland Way, Suite 200 Oakland, CA 94621 USA • Phone: +1 (510) 636-2100
www.condon-johnson.com

James Johnson • jjohnson@condon-johnson.com

Geotechnical contractor specializing in all aspects of drilled shafts, auger cast piles, drilled displacement piles, driven piles, micropiles, grouting, ground improvement, earth retention, and dewatering.



CSG | BOOTH 411

Via Cazzulini 15/A Ricaldone, Alessandria 15010 Italy • Phone: +39014474277

www.csgrl.eu/eng

Mario Lovisolo • mario.lovisolo@csgrl.eu

CSG has achieved a leading position in the stability monitoring for Early Warning applications through the production of the multi-parametric in place automatic columns DMS® (Differential Monitoring of Stability) which are synonymous of accuracy, reliability and robustness. The systems consist of modular monitoring instruments (DMS® 2D/3D column) to be installed in borehole or on the surface, control and data tele-transmission unit and related software.

The new product DMS®-i series has arrived, it is wireless, automatic, able to activate acoustic/visual warning devices on the surface or underground.

CYNTECH GROUP | BOOTH 303

17807 TX-105, Plantersville, TX 77363 USA • Phone: +1 (936) 206-7810

www.cyntechgroup.com

Garrett Dietrich • Garrett.Dietrich@cyntechgroup.com

Since 1981, Cyntech has been designing and manufacturing high-capacity helical pile foundations for the Global Energy, Power, Industrial, and Commercial markets. Compared to other deep foundations, helical piles provide a faster, lower-cost, more efficient high-capacity deep foundation technique with less impact to your jobsite and the environment. Cyntech's manufacturing facilities in the USA and Canada support their global efforts.



CZM FOUNDATION EQUIPMENT | BOOTH 102

962 Interstate Boulevard, Ellabell, GA 31308 USA • Phone: +1 (912) 200-7654

www.czm-us.com

Barrett Rahn • barrett.rahn@czm-us.com

CZM is a leading manufacturer of drilling and pile driving machinery and offers a comprehensive line of equipment engineered in the USA for a variety of drilling applications. CZM is recognized for superior aftersales service and innovative design and also offers rental, corrective and preventative maintenance. Parts are available at our service centers in the USA. CZM is headquartered in Savannah, GA with a sales and rental office in Texas.



DEEP EXCAVATION LLC | BOOTH 209

8008 Shady Lane, Plano, TX 75024 USA • Phone: +1 201-932-4815

www.deepexcavation.com

Dimitrios Konstantakos • dimitrios@deepexcavation.com

Deep Excavation provides a wide range of engineering design services. With a wide international experience we bring together the necessary experience and tools to provide engineering solutions for your needs. Our team utilizes modern software tools, many developed by Deep Excavation, to deliver your solutions quicker and reliably.



DEEP FOUNDATIONS INSTITUTE & DFI EDUCATIONAL TRUST

326 Lafayette Avenue, Hawthorne, NJ 07506 • Phone: +1 (973) 423-4030

www.dfi.org | www.dfitrust.org

Theresa Engler • events@dfi.org

Deep Foundations Institute® (DFI) is an international association of contractors, engineers, manufacturers, suppliers, academics and owners in the deep foundations industry. Our multidisciplinary membership creates a consensus voice and a common vision for continual improvement in the planning, design and construction of deep foundations and excavations.

The Deep Foundations Institute Educational Trust is an independent, 501(c)(3) nonprofit organization established in 2006 by the Deep Foundations Institute (DFI) as its charitable arm. The mission of the Trust is to support and encourage individuals in the fields of study related to the deep foundations industry by providing scholarships and opportunities to meet and work with deep foundations industry leaders.





EARTH CONTACT PRODUCTS (ECP) | BOOTH 405

15612 South Keeler Terrace, Olathe, KS 66062 USA • Phone: +1 (866) 327-0007

www.earthcontactproducts.com

Brandon Walter • bwalter@getecp.com

Manufacturer of Helical Piles, Helical Tiebacks, Drivecast Displacement Piles, Micropile Brackets, and Resistance piers.

ENTACT, LLC | BOOTH 410

999 Oakmont Plaza Drive, Suite 300, Westmont, IL 60559 USA • Phone: +1 (630) 986-2900

Rory Kilkenny • rkilkenny@entact.com

www.entact.com

ENTACT is a national provider of environmental and geotechnical construction solutions. Founded over 30 years ago on the belief that safety, technical excellence, field expertise, and sound business practices are all necessary to deliver outstanding service, ENTACT is recognized today as the premier provider of remedial construction services. Our talented teams implement field remediation and geotechnical solutions for a range of private industry clients at their most challenging projects including active facilities, multi-party sites, and development driven work.

ENTACT directly self-performs field construction work, which enables us to offer efficient, accurate, and timely solutions. We possess expert in-house personnel and state-of-the art equipment. Our in-house personnel include project managers, field engineers, health and safety officers, superintendents, equipment operators, and technicians. We have a large fleet of standard heavy equipment; specialty soil mixing, stabilization rigs and attachments; and dewatering, slurry wall, and sheet pile installation equipment. ENTACT also has an in-house treatability laboratory dedicated to supporting our waste treatment and solidification/ stabilization efforts. Our projects often integrate several scope components and a variety of media including soil, sediment, and groundwater.



ENTACT

FOUNDATION TECHNOLOGIES, INC. | BOOTH 107

1400 Progress Industrial Boulevard, Lawrenceville, GA 30043 USA • Phone: +1 (678) 407-4640

www.foundationtechnologies.com

Tanner Costello • tanner@foundationtechnologies.com

Foundation Technologies, Inc. delivers best-in-class deep foundation products that save you time, delivered when you need them - Enabling deep foundation contractors to build stronger foundations with shorter timelines. Our industry leading brands include CHANCE® Helical Piles & Anchors, CETCO Shore Pac® Polymer Slurry, Shaftspacer® Rebar Cage Alignment Systems, Sonitec® The CSL Tube, Yellow Jacket® Pile Sleeves, Profound® Displacement Pile Drill Tips and Anchor Chairs, and Slickcoat® Anti-friction Coating.



GEOBRUGG | BOOTH 206

22 Centro Algodones, NM 87001 USA • Phone: +1 (860) 377-3230

www.geobrugg.com

Kevin Coyle • kevin.coyle@geobrugg.com

Geobrugg is the worldwide leader for innovation, design and system manufacture of Geohazard Mitigation systems. Our solutions range from Avalanche protection in the mountains to fall of ground and rock burst in underground mining. Our development is ongoing and our scope is constantly expanding. Although we set the standard for Slope Stabilization with the Anchored Tecco system and hazard mitigation with Rock Catchment systems, Slope Drapes and Temporary Shoring solutions we continue to explore and design in new areas. We have developed erosion control solutions for Shoreline and Streambank and debris flow barriers as well that save lives. "Safety is our Nature" isn't just our slogan, it's our way of life.



Safety is our nature



GEO-INSTRUMENTS | BOOTH 402

24 Celestial Drive, Narragansett, RI 02882 USA • Phone: +1 (800) 477 2506

www.geo-instruments.com

Pierre Gouvin • pierre@geo-instruments.com

GEO-Instruments provides automated solutions for monitoring the environmental variables, safety and stability of buildings, excavations, bridges, railways, roads, tunnels, dams, embankments, and slopes. We help clients manage risk by installing advanced monitoring systems and automating the collection, processing, and delivery of alarms, data, and reports. Established in 2003, GEO-Instruments has acquired a reputation for getting results and providing excellent customer service. Our team has extensive experience in instrumentation, information technology, civil engineering, and construction.

GEOPIER, A DIVISION OF CMC | BOOTH 401

130 Harbour Place Drive, Suite 280, Davidson, NC 28036 USA • Phone: +1 (800) 371-7470

www.geopier.com

Kord Wissmann • kord.wissmann@cmc.com

Geopier, a division of CMC, is a design-build engineering firm that specializes in ground improvement. Geopier® developed the first Rammed Aggregate Pier® system in 1989 and has grown its arsenal to include rigid inclusions, slope reinforcement and rail solutions.

Our goal is to customize a design-build ground improvement system that meets your project pricing and schedule objectives. This is accomplished through cost-efficient designs that allow for high design bearing pressures (up to 10,000 psf), greater settlement control, and reduced construction schedules. There is no soil type or structure we cannot handle.



**GEOSTABILIZATION INTERNATIONAL AND ACCESS LIMITED
BOOTH 305**

10225 Westmoor Drive, Suite 205, Westminster, CO 80021 USA • Phone: +1 (425) 758-4757

www.geostabilization.com • www.accesslimited.com

Paige Barnett • paige.barnett@gsi.us

GeoStabilization International is a geohazard mitigation firm operating throughout the USA and Canada. We specialize in emergency landslide repairs, rockfall mitigation and grouting using design/build and design/build/warranty contracting.

At Access Limited, we take pride in our role as industry pioneers dedicated to overcoming the toughest terrains and geological challenges. Specializing in steep slope environments, rockfall, landslides, and debris flows, we are the preferred partner for projects that demand expertise, cutting-edge technology, and an unwavering commitment to excellence.



GRIPPLE INC. | BOOTH 201

814 McLaughlin Run Road, Bridgeville, PA 15017 USA • Phone: +1 (412) 335-0091

www.gripple.com

Rick Ruffing • rruffing@gripple.com

World-leading manufacturer of wire joining & tensioning systems. Employee-owned company.



HUESKER INC. | BOOTH 204

3701 Arco Corporate Drive, Suite 525, Charlotte, NC 28273 USA • Phone: +1 (704) 588-5500

www.HUESKER.com

Carlos Rodriguez • crodriguez@huesker.com

HUESKER, Inc. manufactures eco-friendly geosynthetics known for their long term design strength and durability. HUESKER, Inc. offers the most complete product line of geogrids, geocomposites and geotextiles that deliver cost effective geotechnical engineering solutions.





INTERNATIONAL DRILLING EQUIPMENT (IDE) | BOOTH 106

645 Angus Street, Rural Hall, NC 27045 USA • Phone: +1 (877) 207-6062

www.idedrills.com

Justin Rutland • jrutland@idedrills.com

Stephen Gazo began International Drilling Equipment in 2007 as a distributor of top-quality Casagrande foundation equipment. With a bare-bones staff of only two people, IDE made their first major sale within a month, and subsequent successes earned them the designation of the exclusive Casagrande distributor for the southeast region.

Over the years, IDE's service region has grown substantially. IDE services customers in all of the United States, Alaska, and Hawaii as well as Canada. IDE is the exclusive Casagrande distributor in 37 states and all of Canada. IDE is also the exclusive distributor of Marini Quarries drills, SIP&T drilling tools, Sysbhor Micropile drill tools, STA grouting and vibro equipment and Sebhsa concrete pumps across all of the USA.

KELLER | BOOTH 211

7550 Teague Rd Hanover, MD 21076-1807 USA • Phone: + 1 (410) 551-8200

www.keller-na.com

Robert Schiermeyer • rpschiermeyer@keller-na.com

Keller develops innovative, practical, and cost-effective solutions to geotechnical challenges including deep foundations, ground improvement, groundwater control, liquefaction mitigation, releveling structures, slope stabilization, support of excavation, underpinning, and instrumentation and monitoring. Keller is the largest geotechnical specialty contractor in the world with over 65 offices throughout the US and Canada.



MACCAFERRI NORTH AMERICA | BOOTH 105

825 Commonwealth Avenue, Hagerstown, MD 21740 USA

www.maccaferri.com/us

Mike Koutsourais • m.koutsourais@maccaferri.com

Pioneers in the industry in rockfall protection systems and natural hazard mitigation, Maccaferri offers a wide range of systems to stabilize rock faces, soil slopes and snow masses, reducing risks to people, buildings, and critical infrastructure. Maccaferri's wide variety of systems offer the highest level of performance in the industry. Maccaferri's product offerings include the SteelGrid and RockMesh simple and pinned drapery systems, High Energy Absorption (HEA) cable nets, Dynamic Rockfall Barriers, Hybrid Barriers and Attenuators, Debris Flow Barriers, Rockfall Embankments, and ERDOX Snow Avalanche Protection. Maccaferri's design software suite includes the MacRO1 and MacRO2 software for simple and pinned draperies, and the Mac S-Design for surface strengthening in soil nailing applications. "Engineer a Better Solution with Maccaferri" Feel free to visit our website – www.maccaferri.com



MAGNUM PIERING | BOOTH 306

156 Circle Freeway Drive, Cincinnati, OH 45246 USA • Phone: +1 (513) 759-3348

www.magnumpiering.com

Steve Garlick • sgarlick@magnumpiering.com

For over 40 years, Magnum® Piering has been dedicated to designing, engineering, and manufacturing, the most trusted foundation and anchoring products for the Commercial, Electrical Power, Oil & Gas, Renewable Energy and Residential Construction Industries. Magnum® Piering has worked diligently to elevate the standards of the foundation industry with a proven customer support team and through a multi-step quality control system. We are your trusted foundation team.



MALCOLM DRILLING COMPANY INC. | BOOTH 202

92 Natoma Street San Francisco, CA 94105 USA • Phone: +1 (415) 901 4400

www.malcolmdrilling.com

Peter Faust • pfaust@malcolmdrilling.com

www.malcolmdrilling.com



A building is only as strong as its foundation and an excavation is only as stable as its walls. Malcolm Drilling Company, Inc. leads North America in innovative specialty foundation construction. For over six decades, Malcolm has built deep foundations and earth retention systems, deployed innovative ground improvement techniques, installed dewatering systems for dry construction, and has consistently delivered safe, on-time projects with highest quality standards. Malcolm maintains one of the largest and most up-to-date specialty drilling equipment fleets in the world. We also develop custom drilling tools for unique soil conditions. Malcolm strives to deliver best value to its clients, through traditional bid-build projects and through innovative and cost effective design build or design assist solution. Our goal is to save time and money for owners, while achieving innovation in project delivery. We provide these services nationwide through our regional offices.

MINOVA USA, INC. | BOOTH 210

150 Summer Court, Georgetown, KY 40324 USA • Phone: +1 (502) 863-6800

www.minovaglobal.com

Boris Gorash • boris.gorash@minovaglobal.com



We have developed and delivered reliable ground support and geotechnical solutions for mining, tunneling, infrastructure/civil and surface ground engineering projects since 1882. Our global team of Chemists and Engineers work seamlessly to provide trusted, quality formulations and engineered products, backed by unmatched technical expertise. We offer our customers a full portfolio of solutions, including a comprehensive range of bolting systems (rock dowels, soil nails, tiebacks/tierods, hollow bars, custom roof and rock bolts, etc.), injection chemicals (void filling foams, water-stopping resins, pumpable resins, etc.), grouts, resin capsules, sprayable membranes, coatings and services.

MORRIS-SHEA BRIDGE COMPANY, INC. BOOTH | 301

609 South 20th Street, Birmingham, Alabama 35210-2025 USA • Phone: +1 (205) 956-9518

www.morris-shea.com

Phillip Gallet • phillip.gallet@morris-shea.com



Morris-Shea, a leading deep foundation contractor, installs deep foundation systems for critical commercial and infrastructure projects throughout the United States, the Caribbean and South America. Our team of experienced geotechnical professionals has constructed deep foundations under many of the world's largest energy, manufacturing and industrial projects. Our family-owned company is well-established as a leader for deep foundation installation in heavy civil, commercial, industrial and marine construction markets.

We maintain our position at the cutting edge of the U.S. geotechnical industry by engineering significant cost-savings into innovative designs and deep foundation installation techniques. To this end, Morris-Shea controls the installation rights for DeWaal piles across the entire Western Hemisphere. These unique piles provide the same capacity benefits as driven piling without the expense, noise, pollution and vibration associated with pile driving. The DeWaal Pile System is ideal for deep foundation installation in sensitive wetlands, dense urban areas or occupied industrial facilities.

Our construction partners rely on Morris-Shea for the responsiveness and installation accountability required for critical deep foundation projects. This includes instant verification of installed foundation design parameters from our onboard data acquisition system. Accountability also extends to Morris-Shea's industry-leading safety program that reaches from our headquarters and equipment yards to project job sites throughout North and South America.



NATIONAL PILING PRODUCTS, INC. | BOOTH 205

1159 Electric Avenue, Suite E, Wayland, MI 49348 USA • Phone: +1 (855) 801-7453

www.nppius.com

Matt Armata • matt@nppius.com

National Piling Products serves the deep foundation industry providing, hollow bar, drill rigs, INTRIC grout plants, materials, load testing, and consulting. NPPI provides rentals from Commachio, TEI and other manufacturers. NPPI offers INTRIC Grout Plants with top of class support, and parts service. With four locations in the US, NPPI has hollow bar material ready to ship at competitive prices for any project. Consulting is available for equipment operation, best practices, drilling applications and techniques. NPPI has a team who can provide pile or anchor testing to suit various applications. Our mission at NPPI is to stay client centered, and solution oriented, to enrich all contractors we serve in the deep foundation industry.

NICHOLSON CONSTRUCTION COMPANY | BOOTH 212

2400 Ansys Drive, Suite 303, Cannonsburg, PA 15317 USA • Phone: +1 (412) 221-4500

www.nicholsonconstruction.com

Brian Barkauskas • brian.barkauskas@nicholsonconstruction.com

For almost 70 years, Nicholson is a nationally renowned specialty contractor and has been both a leader, a problem solver and an innovator in the field of geotechnical construction. Nicholson is the U.S. subsidiary of Soletanche Bachy, the world's leading geotechnical contractor, and is part of a global network of unparalleled geotechnical resources and expertise. Nicholson started in and is currently still headquartered in Pittsburgh, PA. We have regional offices in Washington D.C., Kalamazoo MI, Chicago IL, Denver CO, and Salt Lake City UT. We pride ourselves on our ability to consistently provide our clients with value-added solutions that are safely installed, technically sound, practical and efficient. We are firmly committed to the safety of all those who work for and with us and promote an Incident & Injury-Free workplace. All members of the SB Group, as well as our parent company VINCI, are committed to reducing our impact on the environments in which we work. We are committed to providing a learning environment for our employees, focused on providing them consistent opportunities for growth and development. We are committed to carrying forward the long-standing tradition for quality and excellence that Nicholson's reputation has been built on for over half a century. As a company, we are committed to helping define the future of our industry through innovation and leadership.



NUCOR SKYLINE | BOOTH 304

300 Technology Center Way, Suite 450, Rock Hill, SC 29730 USA • Phone: +1 (888) 450-4330

www.nucorskyline.com

David Borger • david.borger@nucorskyline.com

Nucor Skyline offers the broadest range of steel foundation and geostructural products in the industry with nationwide manufacturing, fabrication, coating, and engineering expertise. We are part of the Nucor family, North America's most diversified steel and steel products company. In addition, we are proud to offer the largest rental fleet of sheet piles in North America. Nucor Skyline's flagship products include an unparalleled assortment of: h-piles, steel sheet piles, pipe piles, threaded bars, micropiles, combined wall systems, wide flange & other structural sections, solar piles and piling accessories. Nucor Skyline's knowledgeable engineering team works with owners, engineers, and contractors long before ground is broken. To ensure seamless project coordination and completion, our engineers propose solutions throughout all aspects of design, material selection, installation, and construction sequencing. Nucor Skyline's engineering support is extended even further to include the provision of onsite assistance after a project has started. Our relationships extend beyond sales – we are your true project partner.

Nucor Skyline serves the U.S., Canada, and Caribbean markets.



PRO-DIG, LLC | BOOTH 104

1604 Roseport Road, Elwood, KS 66024 USA • Phone: +1 (785) 856-2661

www.pro-dig-usa.com

Chance Campbell • chance@pro-dig-usa.com

PRO-DIG is a leading global manufacturer specializing in hydraulic driveheads, foundation drilling tools, the Intelli-Tork torque monitoring system, and the Modular Mast System for various drilling applications. Operating from our state-of-the-art facility in Elwood, KS, all PRO-DIG products are proudly made in the USA. We ensure high-quality manufacturing across all drilling application products. Not only do we offer world-class innovative products but also stand behind them with industry-leading customer and after-sales service.



ROCSCIENCE, INC | BOOTH 208

54 St. Patrick Street, Toronto, ON M5T 1V1 Canada • Phone: +1 (416) 698-8217

www.rocscience.com

Robert Bradford • robert.bradford@rocscience.com

Since 1996, Rocscience has envisioned and built world-class solutions for civil, mining, and geotechnical engineers. We have created a solid foundation of software development that brings research and innovation together, building a suite of 19 tools capable of handling your most challenging rock and soil problems. Our mission is to continue developing geotechnical software solutions that work for you today and evolve with your needs tomorrow.



SCHNABEL | BOOTH 101

21355 Ridgetop Circle, Suite 250, Sterling, VA 20166 USA • Phone: +1 (703) 431-0264

www.schnabel.com

Matthew Niermann • matt@schnabel.com

Schnabel is a nationwide design/build contractor specializing in earth retention systems, underpinning, cutoff walls, jet grouting, landslide stabilization, deep soil mixing, and micropile foundations. Founded in 1959, Schnabel was a pioneer in the development of earth tiebacks and soil nails in the USA from their original use for temporary support to their routine use on permanent projects. Schnabel's unique blend of family pride, technological innovation, field experience and engineering excellence consistently enables us to provide our clients with economical solutions and quality work.



TEI ROCK DRILLS | BOOTH 408

P.O. Box 1309, Montrose, CO 81402 USA • Phone: +1 (970) 249-1515

www.teirockdrills.com

Sue Frank • sue@teirockdrills.com

TEI Rock Drills is an industry leader in the manufacture of rock drill excavator attachments, limited access drill rigs, safety equipment, and associated components. All TEI products are created by in-house engineers, uniquely patented, and manufactured in our ISO Certified facility. TEI equipment is proudly made in the US with American made parts to ensure quality, efficiency, and up-to-the-minute innovation.



TERRA INSIGHTS | BOOTH 302

11545 Kingston Street, Maple Ridge, BC V2X 0Z5 Canada • Phone: (506) 449-3760

www.terrainsights.com

Victoria Hitchcock • victoria.hitchcock@measurand.com

Powered by the trusted and experienced brands RST Instruments, Measurand, 3vGeomatics, Syscom Instruments, and NavStar, Terra Insights is a comprehensive platform of geotechnical, structural, and geospatial monitoring technology, along with purpose-built data delivery solutions. Now joined under Orica Digital Solutions, Terra Insights, and partners, GroundProbe, have merged their geotechnical technologies and capabilities with advanced geospatial instrumentation and expertise, providing a comprehensive suite of solutions for their customers. Terra Insights' monitoring technology can measure areas of interest at scale, from high-production mine sites to entire networks, such as railways, highways, and pipelines with a combination of geospatial, ground-based, and structural-based instrumentation. Our platform is also used to measure movement in airports, bridges, water dams, tailings dams, mines, and tunnels.



WESTERN EQUIPMENT SOLUTIONS, LLC | BOOTH 409

681 South March Street, Salt Lake City, UT 84104 USA • Phone: +1 (801) 824- 7532

www.westernequipsolutions.com

Craig Beringer • craigb@westernequipsolutions.com

Western Equipment Solutions is committed to assisting customers in maximizing drilling performance by providing them with the most suitable equipment for their needs. The company prides itself on offering the highest-quality equipment in the industry, along with premium service aimed at enhancing drilling efficiency and productivity while streamlining workflow processes. The sales and support team at Western Equipment Solutions is dedicated to ensuring that customers receive the right equipment for their specific job requirements. With offices located in Nisku, Alberta; Salt Lake City, Utah; and Paramount, California, the company is well-positioned to deliver expert support. Western Equipment Solutions offers comprehensive services including jobsite logistics, onsite technical support and service, and operator training. By prioritizing customer satisfaction and operational excellence, the company remains a trusted partner for those in the drilling industry seeking reliable equipment and support solutions.



WILLIAMS FORM ENGINEERING CORPORATION | BOOTH 207

8165 Graphic Drive Northeast, Belmont, MI 49306 USA • Phone: +1 (616) 866-0815

www.williamsform.com

Steve Kamp • skamp@williamsform.com

Williams Form Engineering Corporation has been providing threaded steel bars and accessories for rock anchors, soil anchors, high capacity concrete anchors, micropiles, tie rods, tiebacks, strand anchors, hollow bar anchors, post-tensioning systems, and concrete forming hardware systems in the construction industry for over 100 years.



WORD ROCK DRILLS | BOOTH 404

4565 Reid Road Elon, NC 27244 USA • Phone: +1 (336) 584-6700

www.wordrockdrills.com

Paige Patterson • paige@wordrockdrills.com

At WORD Rock Drills, our passion is to be a great company that enhances families' quality of life for many generations. In working towards our passion, we strive to "Make a Way" to provide timely delivery of quality drilling solutions that best fit our customer's needs. We accomplish this in many ways including our versatile drilling options, our greater than 30 years experience in the industry and our skilled sales and technical teams. For every drill attachment, our customers get more than the product they want - they get a team of professionals who stand with them, ensuring their drilling solution lasts many years on the job. WORD Rock Drills specializes in Hydraulic and Pneumatic drifters and Rock Drilling Systems. We carry a complete line of Excavator, Skid Steer and Wagon Drill Attachments, as well as All-in-One Drilling Units.





• Now also •
Buy American
Made in the USA



smart**TITAN**
Designing micropiles online

- Foundations / Underpinning
- Anchorages for retaining structures
- Slope stabilization and soil nailing
- Tunnelling

ISCHEBECK USA Inc.
Phone: +1 239 403 8522
E-Mail: info@ischebeckusa.com
www.ischebeck.com



ISCHEBECK[®]
TITAN

**Let's rearrange
the chairs.**

TIEBACK ANCHOR CHAIRS AND BEAMS

AN ALTERNATIVE TO TRADITIONAL WEDGE PLATES,
BEARING PLATES, AND WALERS/CSM BEAMS



**NO WELDING
REQUIRED**



**VARIABLE
ANGLES**



**COST
EFFICIENT**



REUSABLE

PROFOUND®
DRILL SOLUTIONS



REQUEST A QUOTE

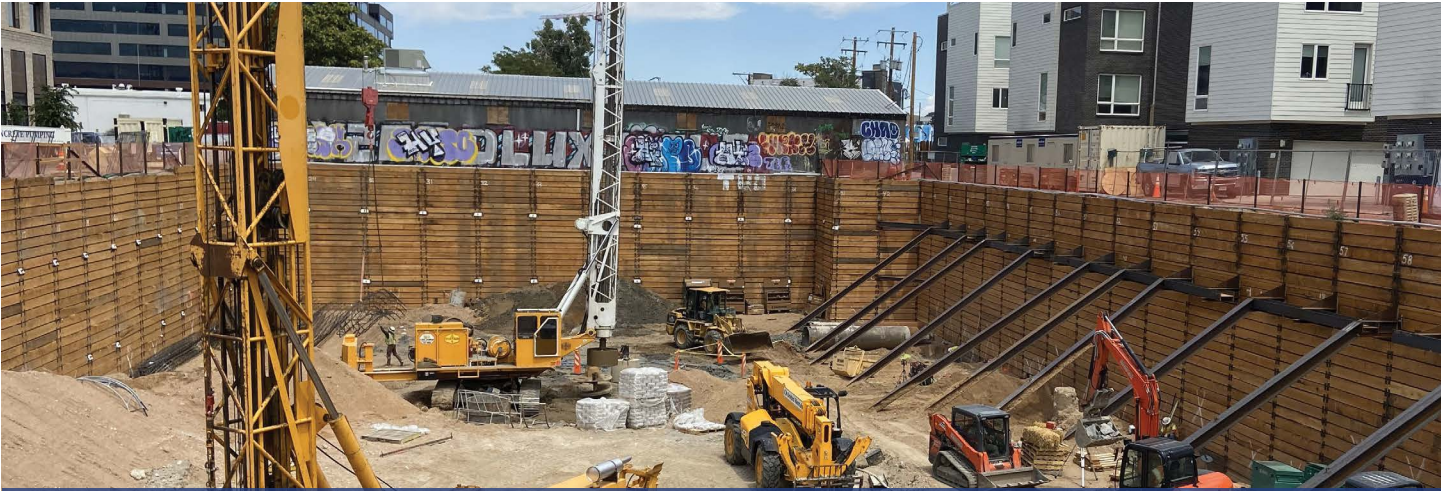
Stronger Foundations. Shorter Timelines.

DRILLING FLUIDS | DISPLACEMENT PILE DRILL TIPS | SHORING
HELICAL PILES & ANCHORS | FRICTION REDUCTION
DRILLED SHAFT REBAR CENTRALIZERS | CSL TESTING TUBES



SCHNABEL

PRINCIPLED. PROVEN.



3400 WALNUT | DENVER, CO



GALLATIN COUNTY SLIDE REPAIR | WARSAW, KY



RBWWTP | EL PASO, TX



I-275/SR 93 | TAMPA BAY, FL

EARTH RETENTION SOLUTIONS FROM ONE OF THE NATION'S TOP DESIGN-BUILD CONTRACTORS



Scan the QR code to explore our custom earth retention and foundation solutions or visit us at:

[schnabel.com](https://www.schnabel.com)

OUR SERVICES:

- ✓ EXCAVATION SUPPORT
- ✓ LANDSLIDE STABILIZATION
- ✓ SHOTCRETE & SOIL NAILING
- ✓ MICROPILES
- ✓ JET GROUTING

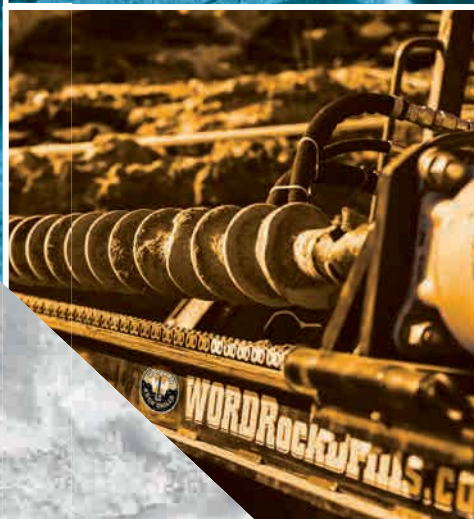
Partner with us on your next project—call today to get started!



NATIONWIDE LOCATIONS
DC | PA | GA | IL | CO | TX | CA



703-880-3502



Make a Way.

VERSATILE DRILLING OPTIONS • QUICK DELIVERY • IN-STOCK PARTS

wordrockdrills.com | 1.336.584.6700



GEOTECHNICAL

YOUR SUSTAINABILITY PARTNER

- Soil Nails
- Micropiles
- Tie-Rods
- Grouting
- Strand Anchor System
- Spray Coatings & Membranes
- Chemical Injections
- Cavity Filling
- Ballast Bonding (Railroads)
- Engineering Support



COURAGE



PASSION



PERFORMANCE



TEAMWORK



Upcoming DFI Events

13TH ANNUAL
New Jersey Golf Outing
DFI EDUCATIONAL TRUST | NJ ACE MENTOR PROGRAM



August 12, 2024 | Lake Mohawk Golf Club | Sparta, New Jersey

17th Annual Gala Fundraising Dinner
Cerace On The Park

Thursday, November 14, 2024 | Corona, New York

DFI EDUCATIONAL TRUST
California Golf Outing
Dublin Ranch Golf Course



September 6, 2024 | Dublin, California

Helical Piles - Tiebacks - Anchors
Tradeshaw & Educational Seminar
With Live Demonstrations

May 7-8, 2025 | Durham, Connecticut

Deep Foundation Technologies for Infrastructure Development in India
DFI-India 2024
13th Annual Conference



September 19-21, 2024 | Panaji, Goa

DFI-EFFC
GEOTECHNICS REIMAGINED



International Conference on Deep Foundations and Ground Improvement

May 21 - 23, 2025 | Bruges, Belgium

49th Annual Conference on Deep Foundations
DFI49
Water - Resiliency - Infrastructure



October 7 - 10, 2024 | Aurora, Colorado

Super Pile '25
Piling Design & Construction Conference



June 18-20, 2025 | Cleveland, Ohio

Tunneling and Underground Committee Presents
Shotcrete Short Course



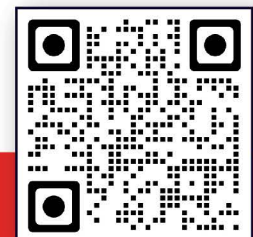
November 12-13, 2024 | Sealy, Texas

S3: Slopes, Support and Stabilization



2025

dfi.org/events/upcoming-events





S3:

Slopes, Support and Stabilization

Thank You to Our Sponsors*

Gold



Silver



NATIONAL PILING PRODUCTS INC

Hotel Room Key



Networking Luncheons



Welcome Reception



SCHNABEL

PRINCIPLED. PROVEN.

Lanyard



Pen



WiDF Networking Reception



www.dfi-events.org/s3-24

*As of 7/25/2024